

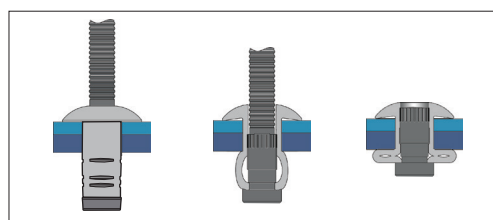
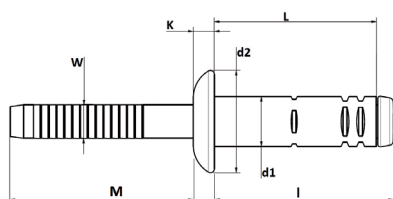
# BLIND RIVET G-BRA REMACHE G-BRA

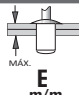

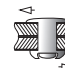
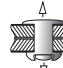


English	Español	Français	Deutsch	Portugues
Dome head	Cabeza alomada	Tête plate	Flachrundkopf	Cabeça boleada
Body: Stainless steel A2 *	Cuerpo: Inox A2 *	Corps: Inox A2 *	Hülse: Edelstahl A2 *	Corpo: Inox A2 *
Mandrel: Stainless steel A2 **	Vástago: Inox A2 **	Clou: Inox A2 **	Dorn: Edelstahl A2 **	Prego: Inox A2 **

\* Inox AISI 304 CU 1.4567

\*\* Inox AISI 304 1.4301



d1 Ø m/m	L Nominal m/m	 E m/m		d2 Ø m/m	K m/m	W m/m	I m/m	 (N)	 (N)	Part No./Ref.
<b>6,4</b>	<b>12,7</b>	2,0 - 4,5	6,70-7,00	13	2,70	4,20	15,5	8.500	8.800	189C006413
	<b>14,7</b>	4,0 - 6,5	6,70-7,00	13	2,70	4,20	17,5	10.000	8.800	189C006415
	<b>17,7</b>	6,0 - 8,5	6,70-7,00	13	2,70	4,20	20,5	10.000	8.800	189C006417
	<b>20,7</b>	8,5 - 11,0	6,70-7,00	13	2,70	4,20	23,5	11.000	8.800	189C006420
	<b>23,7</b>	10,5 - 13,0	6,70-7,00	13	2,70	4,20	26,5	11.000	8.800	189C006423
	<b>25,7</b>	12,5 - 15,0	6,70-7,00	13	2,70	4,20	28,5	11.000	8.800	189C006425

Test according to / Ensayos realizados según EN ISO 14589

The total or partial reproduction of this document is prohibited. The figures showed in this catalogue are typical values and they could be changed as a result of the continuous improvement of products. Please, do not hesitate to contact us if you need an updated information. Queda prohibida la reproducción total o parcial de este documento. Los datos que aparecen en este catálogo son valores típicos y están sujetos a modificaciones como consecuencia de la mejora continua de los productos. Consúltenos si necesita información actualizada.