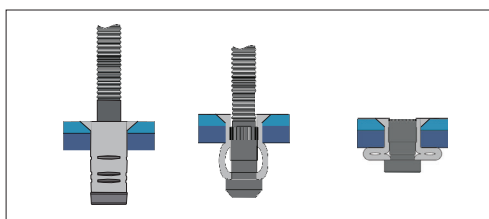
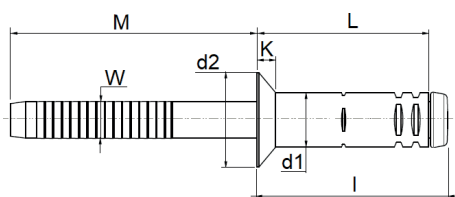


# BLIND RIVET G-BRA REMACHE G-BRA



| English                        | Español                | Français          | Deutsch               | Portugues           |
|--------------------------------|------------------------|-------------------|-----------------------|---------------------|
| Countersunk head 100°          | Cabeza avellanada 100° | Tête fraisée 100° | Senkkopf 100°         | Cabeça embeber 100° |
| Body: Stainless steel A2 *     | Cuerpo: Inox A2 *      | Corps: Inox A2 *  | Hülse: Edelstahl A2 * | Corpo: Inox A2 *    |
| Mandrel: Stainless steel A2 ** | Vástago: Inox A2 **    | Clou: Inox A2 **  | Dorn: Edelstahl A2 ** | Prego: Inox A2 **   |

\* Inox AISI 304 CU 1.4567  
\*\* Inox AISI 304 1.4301



| d1<br>Ø<br>m/m | L<br>Nominal<br>m/m | <br>MAX.<br>E<br>m/m |           | d2<br>Ø<br>m/m | K<br>m/m | W<br>m/m | I<br>m/m | <br>(N) | <br>(N) | Part No./Ref. |
|----------------|---------------------|----------------------|-----------|----------------|----------|----------|----------|---------|---------|---------------|
| <b>6,4</b>     | <b>13,7</b>         | 0,0 - 3,5            | 6,70-7,00 | 11,0           | 2,20     | 4,30     | 16,5     | 8.500   | 8.800   | 189D006414    |
|                | <b>15,7</b>         | 2,0 - 5,5            | 6,70-7,00 | 11,0           | 2,20     | 4,30     | 18,5     | 10.000  | 8.800   | 189D006416    |
|                | <b>17,7</b>         | 4,0 - 7,5            | 6,70-7,00 | 11,0           | 2,20     | 4,30     | 20,5     | 10.000  | 8.800   | 189D006418    |
|                | <b>19,7</b>         | 6,0 - 9,5            | 6,70-7,00 | 11,0           | 2,20     | 4,30     | 22,5     | 11.000  | 8.800   | 189D006420    |
|                | <b>23,7</b>         | 10,0 - 13,5          | 6,70-7,00 | 11,0           | 2,20     | 4,30     | 26,5     | 11.000  | 8.800   | 189D006424    |
|                | <b>25,7</b>         | 12,0 - 15,5          | 6,70-7,00 | 11,0           | 2,20     | 4,30     | 28,5     | 11.000  | 8.800   | 189D006426    |

The total or partial reproduction of this document is prohibited. The figures showed in this catalogue are typical values and they could be changed as a result of the continuous improvement of products. Please, do not hesitate to contact us if you need an updated information. Queda prohibida la reproducción total o parcial de este documento. Los datos que aparecen en este catálogo son valores típicos y están sujetos a modificaciones como consecuencia de la mejora continua de los productos. Consúltenos si necesita información actualizada.